

Opus II



Craftsman



Modern Farmhouse



Contemporary

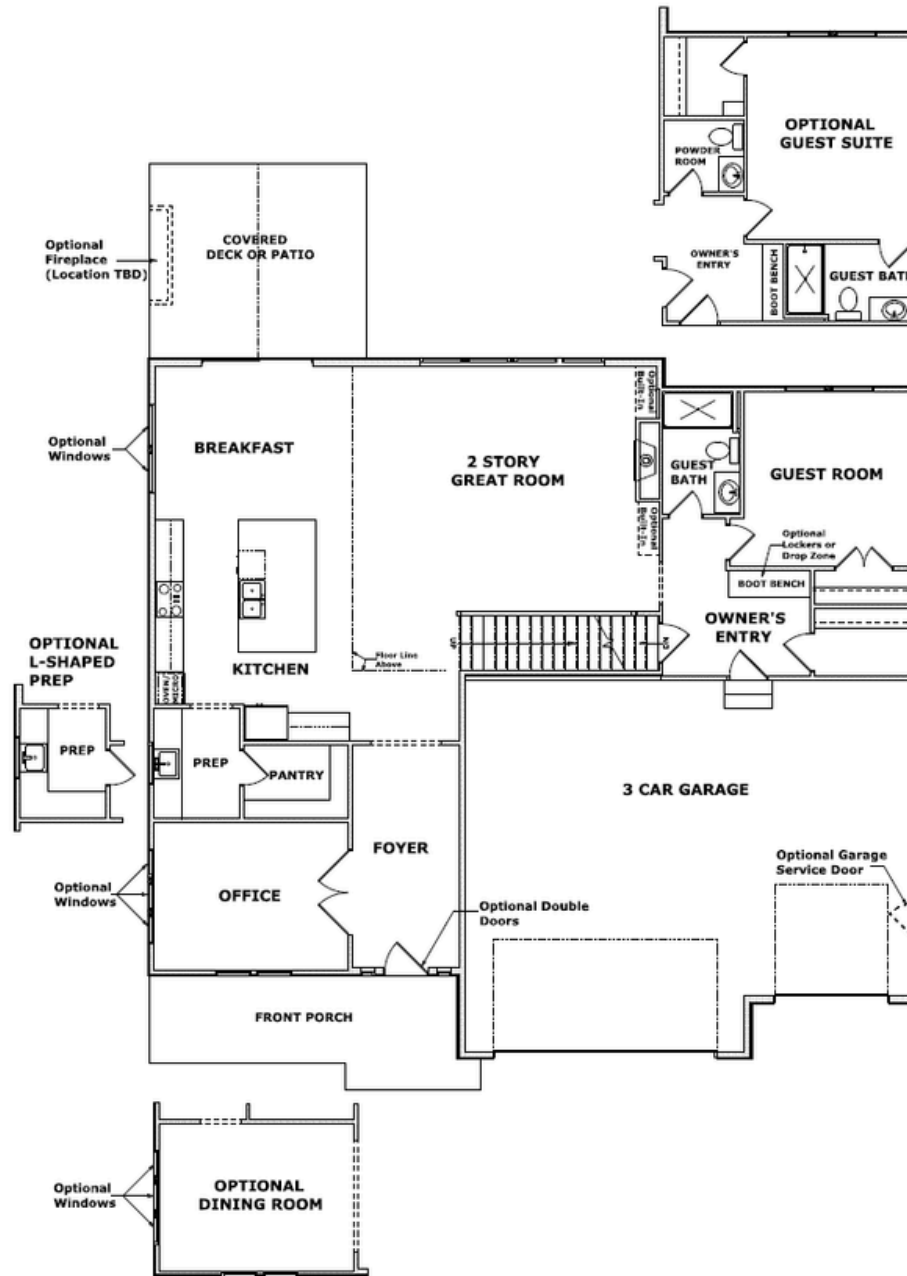


Prairie



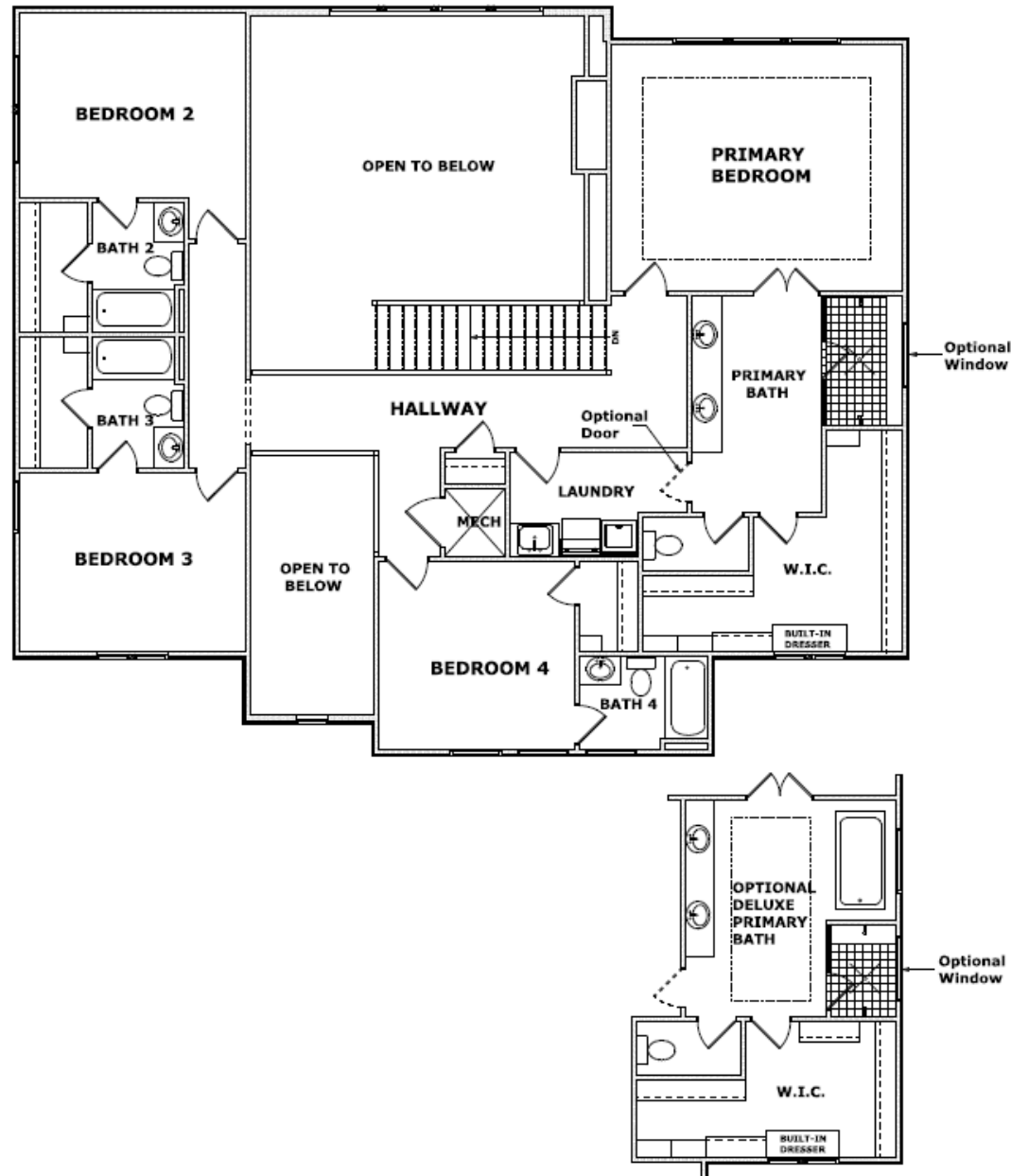
Opus II

MAIN LEVEL



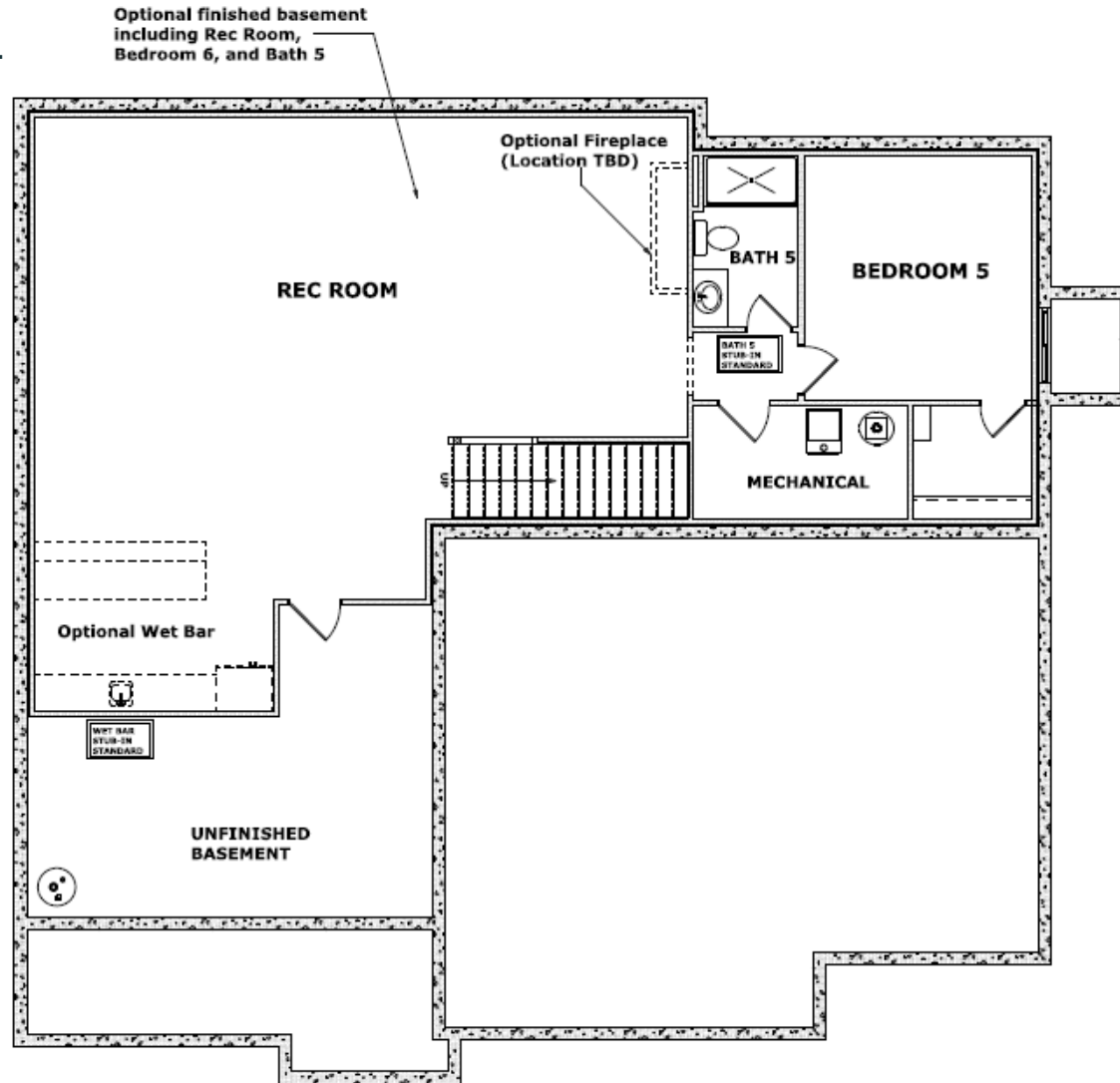
Opus II

UPPER LEVEL



Opus II

OPTIONAL LOWER LEVEL



Opus II

SIGNATURE OPUS II FEATURES

- 8' interior doors on main level including full view glass double doors at office
- 2-story Great Room with floor to ceiling stone fireplace
- 48" x 36" Gas fireplace with blower and battery back-up
- Prep kitchen base cabinet with SS sink, disposal and window
- Dual shower heads in Primary Shower
- Built in dresser in Primary closet
- All secondary bedrooms include private bath and walk-in closets
- Laundry room sink and cabinet
- Two 95% high efficiency gas furnaces
- Painted Garage – SW Pure White with base trim

Standard Included Features:

STRUCTURAL and EXTERIOR

- 10' ceilings on main floor and approximate 8' ceilings on second floor
- 9' foundation walls
- Soffit lighting
- Tray ceiling in primary bedroom
- 8' non insulated garage doors
- Wifi Garage openers for (2) doors and (1) keypad
- Covered patio with exterior fan & light
- Irrigation system
- Landscape standard package
- 30 Yr. composite roof

CABINETS and COUNTERTOPS

- Custom beech cabinets with hidden hinges, and soft close doors and drawers
- Granite/quartz tops for all solid surfaces throughout home
- Undermount composite sink in Kitchen
- Adjustable shelving in kitchen and pull-out trash can
- Walk-in pantry
- Upper laundry cabinet with shelf and pole

FIREPLACE, TRIM, & MIRRORS

- Direct vent gas fireplace with a stained floating mantel
- Gas fireplace with blower and battery back-up (size is plan specific)
- Trim wrapped mirror in primary bathroom and bath 2
- Stained handrail and balusters with iron spindles
- Brushed nickel doorknobs and hinges
- Long front door handle (black)

FLOORING and TILE

- Premium laminate flooring in foyer, great room, kitchen, pantry, dining area, owner's entry and laundry
- Tile flooring in primary bathroom and secondary bathrooms
- Carpet in all bedrooms, stairs with 8lb pad
- Wall Tile on kitchen backsplash, primary bathroom shower, and bath 2 shower

APPLIANCES

- GE stainless steel appliance package: dishwasher, gas cooktop, wall oven, hood insert, and microwave with trim kit.

ENERGY EFFICIENCY and MORE

- 95% high efficiency gas furnace
- 13.4 SEER2 air conditioner
- Programmable thermostat
- Whole house humidifier
- Pella vinyl low-E thermal windows
- Passive radon system (fan kit not included)
- Sump pump

ELECTRICAL and LOW VOLTAGE

- 200 AMP panel
- LED light bulbs in all recessed lighting
- 3 CAT6 Data: great room, primary bedroom, lower-level rec room (with finished basement option)
- Pre-Wired for ceiling fan in great room and bedrooms
- Under cabinet lights in kitchen

PLUMBING and FIXTURES

- 50 gallon electric water heater
- Lower-level wet bar stub and bathroom stub
- Brushed nickel plumbing package through out home
- Gas lines at cooktop and great room fireplace
- Ice maker line for kitchen fridge

PAINT

- Interior: 1 flat wall color, 1 trim color, and 1 stain color
- Exterior: 1 body color, 1 trim color, and 1 accent color

* white, light, or ultra dark colors may incur additional charges

* trim color only applies to front elevation unless community requires 4 sided painted trim

STANDARD ALLOWANCES

Lighting: \$2,900

Tile: Standard (Level 1)

Flooring: Standard (Level 1)



**Standard Features are subject to change without notice and could vary by floor plan, lot, and community.